



臺北醫學大學 泌尿腎臟研究中心-110 年 09 月例會

時間：**110 年 09 月 16 日(星期四) 11:30-12:30**

地點：主會議場-雙和醫院 9C 會議室

視訊會議-(請以正式全名登入會議室，以利進行會議簽到)

使用 Google Meet(會議前 10 分鐘即開啟會議室)

(敬略稱位)

會議主席：吳麥斯

與會人員：

【附醫】劉明哲、蔡曜州、葉劭德、吳建志、林孝友、吳政誠、張景欣、陳偉傑、顧芳瑜、羅詩修、方德昭、陳錫賢、林彥仲、吳岳霖、高治圻、陳靜怡、葉曙慶

【萬芳】溫玉清、李良明、林克勳、林雍偉、蕭志豪、許軒豪、賴宗豪、許志呈、鄭仲益、陳作孝、蘇裕謀、陳彥成、劉崇德、楊韻紅、李明哲

【雙和】吳佳璋、陳冠州、劉家宏、江怡德、林佳達、鄒凱亦、高偉棠、胡書維、魏汶玲、吳美儀、林裕峯、洪麗玉、鄭彩梅、邱怡仁、陳佑璋、廖家德、游博翰、陳正憲、邱惠雯

【新國民】許永和、鄒居霖

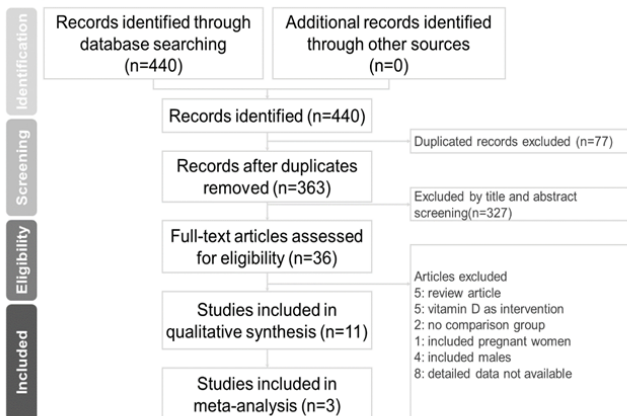
長官指導：林建煌校長、黃彥華研發長、許志成教授、崔克宏副院長

議程：

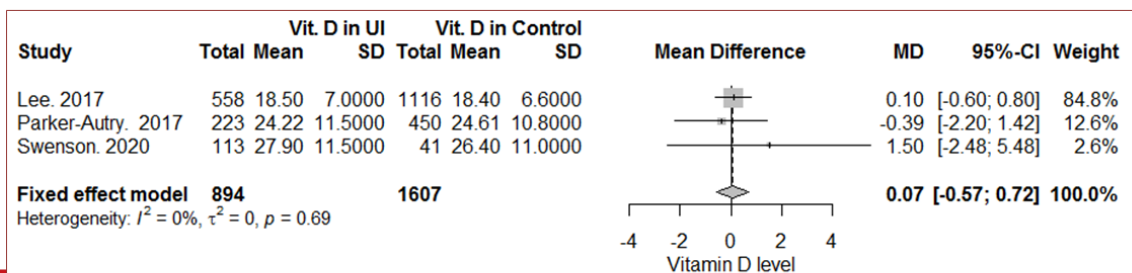
一、 功能性泌尿團隊、急性腎病團隊 小組報告

參與者	資訊	參與者	資訊	參與者	資訊
蕭偉詩事務員 (你) 會議主辦人		崔克宏副院長	✂	d118105006 TMU	✂
蕭偉詩事務員 會議主辦人	✂	許永和	✂	Josh KAO	✂
95207溫玉清泌尿科	✂	葉曙慶	✂	KC Chen	✂
內科部腎臟內科高治圻	✂	劉明哲-北醫	✂	Mai-Szu Wu	✂
吳佳瑋	✂	鄭彩梅專任主治醫師	✂	Thomas Hsu	✂
吳美儀	✂	Chen Tim	✂	Virginia Yang	✂
林彥仲	✂	Chen Tim (簡報)	✂		
洪麗玉專任主治醫師	✂	Chulin Chou	✂		

Serum vitamin D levels in females with urinary incontinence: a meta-analysis of observational trials



- 2 cohort studies, 4 case-control studies and 5 cross-sectional studies were included
- Meta-analysis included 2 cohort studies and 1 cross sectional study, 2501 females
- Int. Urogynecology Journal



萬芳重點研究計畫 (109-wf-eva-26)

薑黃素對於抑制發炎所致膀胱纖維化之療效探討

發展 “因膀胱纖維化導致膀胱功能損害”

- 背景: 膀胱纖維化導致功能失常，導因於間質性膀胱炎/膀胱疼痛症候群
- 目的: 藉由分析膀胱纖維化的路徑，找出可治療間質性膀胱炎/膀胱疼痛症候群的藥物

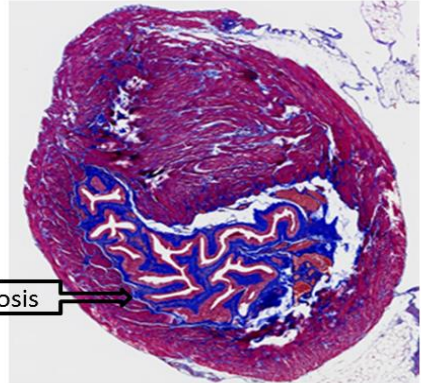


Original article
 Therapeutic effect of modulating the NLRP3-regulated transforming growth factor- β signaling pathway on interstitial cystitis/bladder pain syndrome

Hung-Jen Shih^{a,b,c}, Chao-Yuan Chang^{d,e,f}, Chung-Howe Lai^{a,1}, Chun-Jen Huang^{d,e,f,*,1}

^a Department of Urology, Wan Fang Hospital, Taipei Medical University, Taipei, Taiwan
^b Department of Urology, School of Medicine, College of Medicine, Taipei Medical University, Taipei, Taiwan
^c Department of Urology, Chenghua Christian Hospital, Changhua, Taiwan
^d Integrative Research Centre for Critical Care, Wan Fang Hospital, Taipei Medical University, Taipei, Taiwan
^e Department of Anesthesiology, Wan Fang Hospital, Taipei Medical University, Taipei, Taiwan
^f Graduate Institute of Clinical Medicine, College of Medicine, Taipei Medical University, Taipei, Taiwan

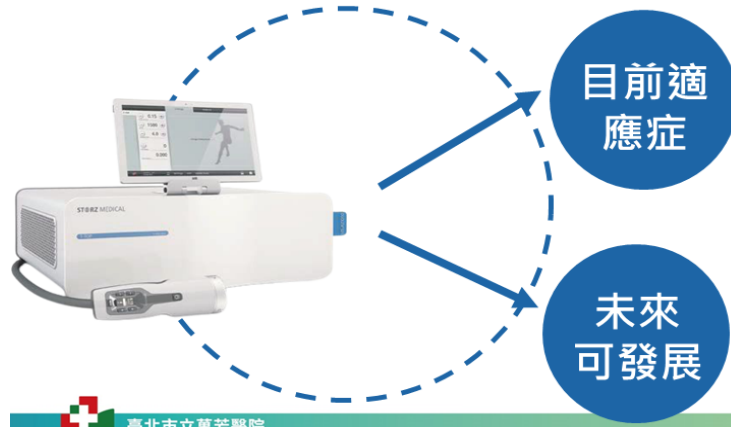
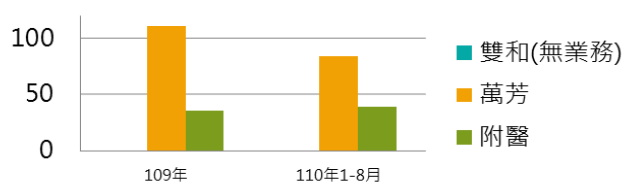
(IF: 4.545)



低能量震波治療之發展

Li-ESWT (Low intensity extracorporeal shockwave therapy)

低能量震波



- CP/CPPS (Chronic prostatitis/chronic pelvic pain syndrome)
- ED (Erectile dysfunction)
- IC (Interstitial cystitis)
- OAB (Overactive bladder)
- SUI (Stress urinary incontinence)

Harmonizing acute and chronic kidney disease definition and classification: report of a Kidney Disease: Improving Global Outcomes (KDIGO) Consensus Conference



OPEN

Norbert H. Lameire^{1,9}, Adeera Levin^{2,9}, John A. Kellum^{3,9}, Michael Cheung⁴, Michel Jadoul⁵, Wolfgang C. Winkelmayer⁶ and Paul E. Stevens^{7,9}; for Conference Participants⁸

¹Renal Division, Department of Medicine, University Hospital Ghent, Ghent, Belgium; ²Division of Nephrology, The University of British Columbia, Vancouver, British Columbia, Canada; ³Department of Critical Care Medicine, Center for Critical Care Nephrology, University of Pittsburgh, Pittsburgh, Pennsylvania, USA; ⁴KDIGO, Brussels, Belgium; ⁵Cliniques Universitaires Saint Luc, Université Catholique de Louvain, Brussels, Belgium; ⁶Selzman Institute for Kidney Health, Section of Nephrology, Department of Medicine, Baylor College of Medicine, Houston, Texas, USA; and ⁷Kent Kidney Care Centre, East Kent Hospitals University NHS Foundation Trust, Canterbury, UK

Kidney International
2021/07/09

Evaluation and management of ambulatory AKD patients

Minimal dataset for evaluation

- History and examination including:
 - Family history, past medical history, drug history (including recreational and over-the-counter), occupational exposure and exposure to traditional remedies, relevant travel, infectious diseases, and envenomations
 - Full physical examination including blood pressure (lying and standing) and assessment of volume status
- Serum creatinine and eGFR, urea and electrolytes, full blood count
- Urinary dipstick (qualitative albuminuria/proteinuria)
- Point-of-care ultrasound

Other specialty tests and simple imaging

- Urine microscopy
- Quantitative albuminuria/proteinuria (point of care and laboratory)
- Urine culture
- C-reactive protein
- Bone and liver profiles, protein electrophoresis
- Uric acid, lipid profile
- Parathyroid hormone
- Coagulation studies
- Plain radiology and ultrasound

Serology, advanced imaging, and histology

- Selected seroimmunologic tests
- Duplex Doppler ultrasound
- Kidney biopsy (light microscopy, immunofluorescence, electron microscopy)
- CT scanning
- MRI
- PET
- Nuclear medicine